

Name: _____ () Class: _____ Date: _____

Learning Activities during Class Suspension (20200203-20200420)

Subject: F.1 IS

Lesson 7:

Date: 20200226-20200228

Topic: Ch.4 Cell, human reproduction and heredity

Subtopic: 4.2 Human reproduction

Material: Textbook 1B, Workbook1B, Note 4, PowerPoint, video

Self-learning activities:

1

Watch the video.

http://eresources.oupchina.com.hk/NMASCI/video/nms_prelss0402_e.html



2. Finish the exercise: F1 IS(1AB)_lesson 7_LMK_20200226 on P.2-5

Remarks:

You can download all the materials (Workbook, Note, PowerPoint, video) from
Google drive

<https://drive.google.com/drive/folders/1Q2tB2xm8EJEYtyRIjZrTFqGnqEZOdwBz?usp=sharing>



Pre-lesson task

Book 1B Unit 4
Section 4.2
Human reproduction (p. 29)



Watch the video.

http://eresources.oupchina.com.hk/NMASCI/video/nms_prelss0402_e.html



The diagram illustrates the genetic composition of a human body cell and a developing fetus. On the left, a set of 23 chromosomes is shown, labeled "23 chromosomes". In the center, a diagram of a body cell is shown with a nucleus containing a single set of 23 chromosomes, labeled "in a body cell". On the right, another set of 23 chromosomes is shown, labeled "23 chromosomes". Below this, a 38-week-old fetus is shown, labeled "38-week-old foetus" and "the baby is about to be born". The Oxford University Press logo is visible in the top right corner of the diagram area.

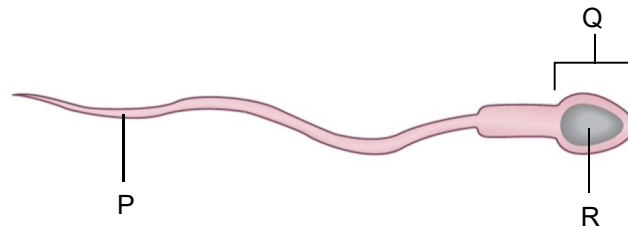


Write notes here.



Answer the questions.

Directions: Questions **1** and **2** refer to the diagram below. The diagram shows a human sex cell.



1 Which of the following statements about its structures are correct?

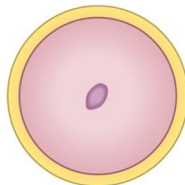
- (1) Structure P beats to allow the sperm to swim.
- (2) The size of structure Q is similar to the size of an ovum.
- (3) Structure R carries 23 chromosomes.

- A** (1) and (2) only **B** (1) and (3) only
C (2) and (3) only **D** (1), (2) and (3)

2 Where is this kind of sex cell produced in the male reproductive system?

- A** Testis **B** Sex glands
C Scrotum **D** Penis

3 The diagram below shows a human sex cell.



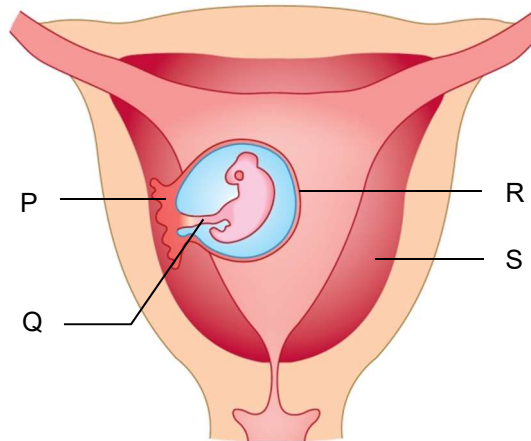
Which of the following statements about this kind of sex cell are correct?

- (1) It swims towards the sperms once it is released.
- (2) Its nucleus carries 23 chromosomes.
- (3) It is released from the ovary.

- A** (1) and (2) only **B** (1) and (3) only
C (2) and (3) only **D** (1), (2) and (3)


- 4 In which structure does fertilization usually occur?
- A Vagina
 - B Uterus
 - C Oviduct
 - D Ovary

- 5 The diagram below shows some structures of a developing embryo.



Which of the following matches between the structures in the diagram and their names is INCORRECT?

	Structure	Name
A	P	Placenta
B	Q	Umbilical cord
C	R	Amnion
D	S	Amniotic fluid



Answers

- 1
- 2
- 3
- 4
- 5