

Name: _____ () Class: _____ Date: _____

Learning Activities during Class Suspension (20200203-20200315)

Subject: F.1 IS

Lesson 5:

Date: 20200217-20200223

Topic: Ch.4 Cell, human reproduction and heredity

Subtopic: 4.1 Cell

Material: Textbook 1B, Workbook1B, Note 4, PowerPoint, video

Self-learning activities:

1

Watch the video.

http://eresources.oupchina.com.hk/NMASCI/video/nms_prelss0401_e.html



2. Finish the exercise: nms_prelss_ws0401_es(F1AB) on P.2-6

Remarks:

You can download all the materials (Workbook, Note, PowerPoint, video) from
Google drive

<https://drive.google.com/drive/folders/1Q2tB2xm8EJEYtyRIjZrTFqGnqEZOdwBz?usp=sharing>



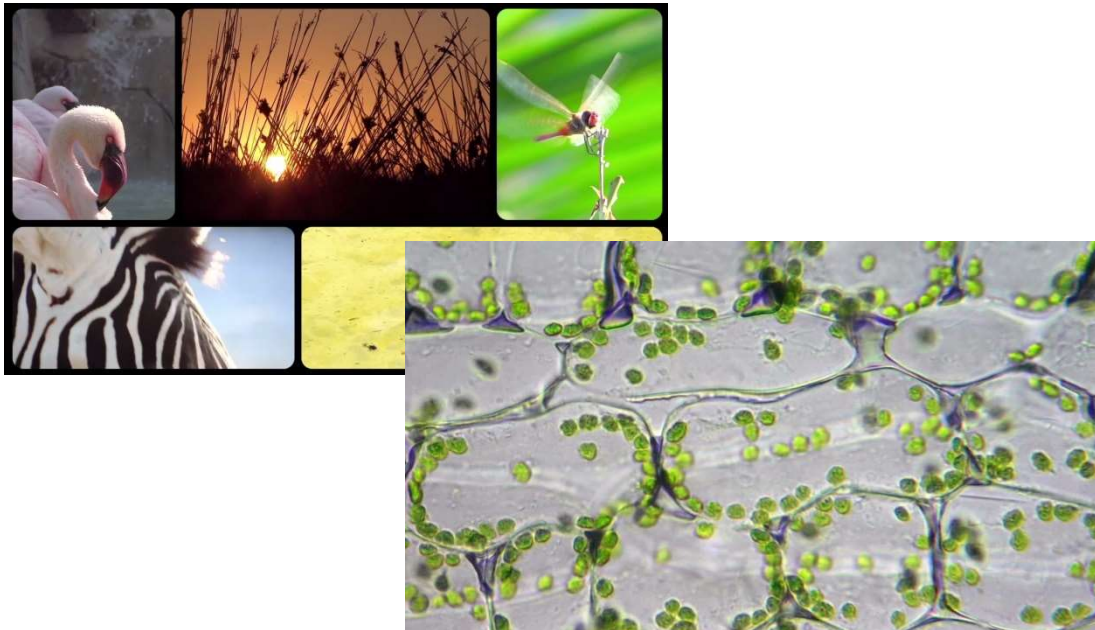
Pre-lesson task

Book 1B
Unit 4
Section 4.1 Cells (p. 3)



Watch the video.

http://eresources.oupchina.com.hk/NMASCI/video/nms_prelss0401_e.html

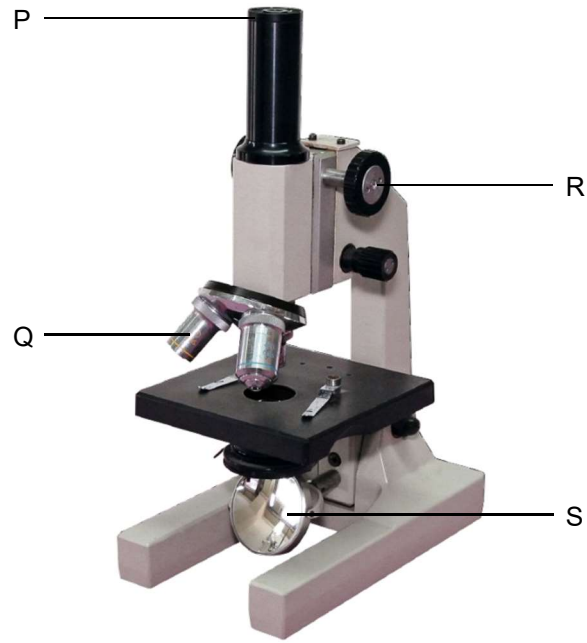


Write notes here.



Answer the questions.

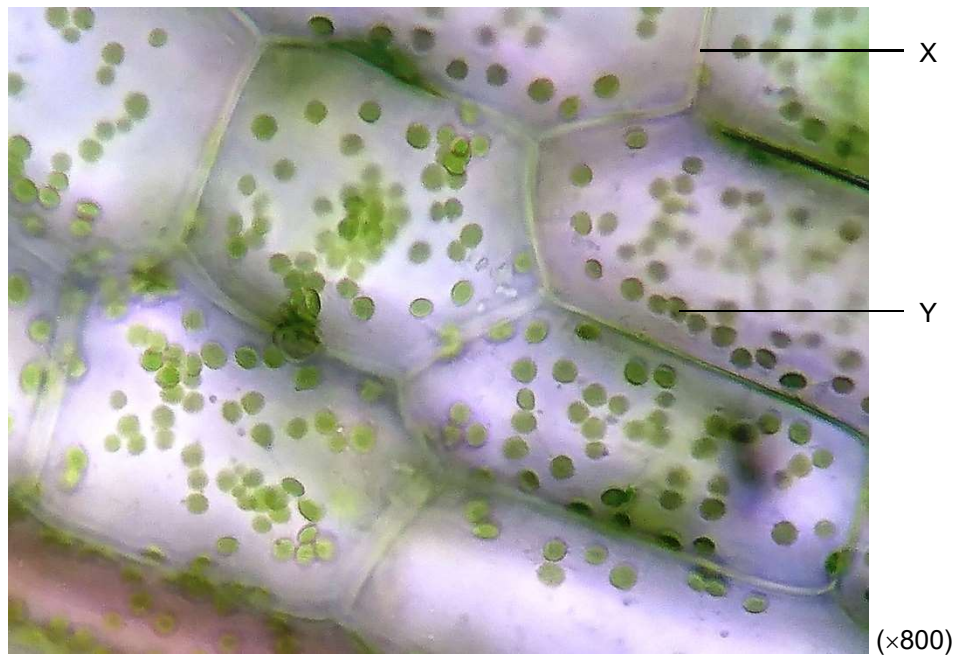
1 The photo below shows a light microscope.



Which of the following is a correct match between the structures in the photo and their names?

	Structure	Name
A	P	Objective
B	Q	Eyepiece
C	R	Coarse adjustment knob
D	S	Diaphragm

Directions: Questions **2** and **3** refer to the photo below which shows some plant cells observed under a light microscope.



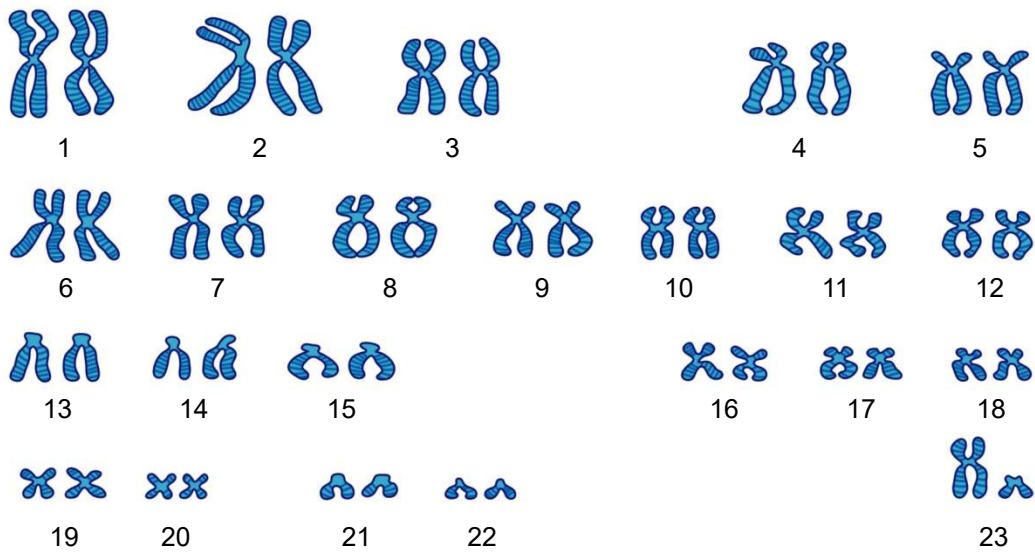
2 What is structure X?

- A Cell wall
- B Cytoplasm
- C Nucleus
- D Chloroplast

3 Which of the following is the function of structure Y?

- A It contains DNA to control the activities of the cell.
- B It controls the movement of substances into and out of the cell.
- C It stores water and dissolved minerals.
- D It is the site where photosynthesis occurs.

4 The diagram below shows the chromosomes in a human body cell.



Which of the following statements are correct?

- (1) There are 23 pairs of chromosomes.
- (2) The 1st pair of chromosome determines our sex.
- (3) The cell is taken from a male.

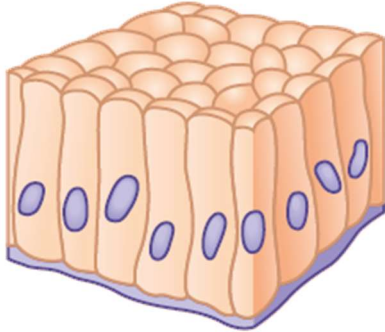
- A (1) and (2) only
- B (1) and (3) only
- C (2) and (3) only
- D (1), (2) and (3)

5 The process of cell division leads to the formation of

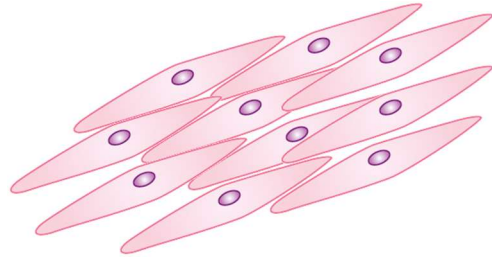
- A new cells.
- B different types of cells.
- C larger cells.
- D new tissues.

6 Different tissues work together as a/an _____ for a particular function.

epithelial tissue



muscle tissue



- A cell
- B organ
- C system
- D organism



Answers

- 1
- 2
- 3
- 4
- 5
- 6